

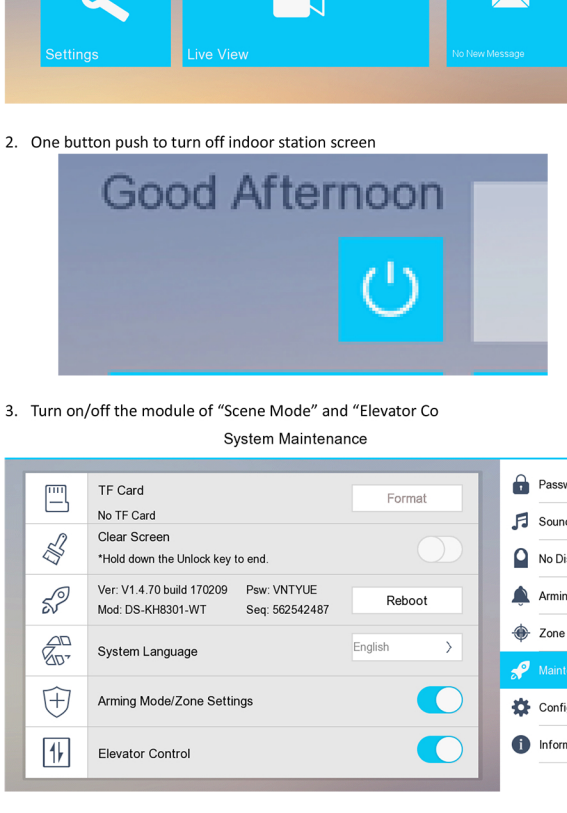
New Feature Introduction for Intercom Firmware V1.4.70

Attention here when you use the new fw:

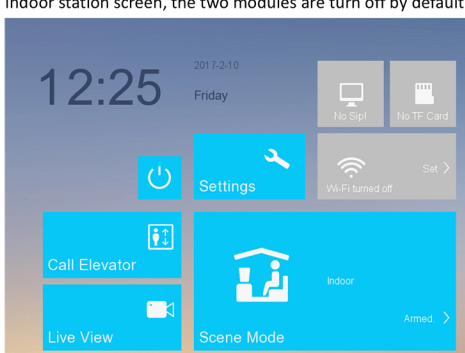
1. It is a customization firm, not base line. But all features will be realized at base line in the future (maybe July 2017).
2. When you upgrade the new fw, you must **restore default setting** for the device.
3. This fw supports all intercom models, except DS-K6210-L, DS-KD6002-VM, DS-KB8112-IM.

New Function and Features:

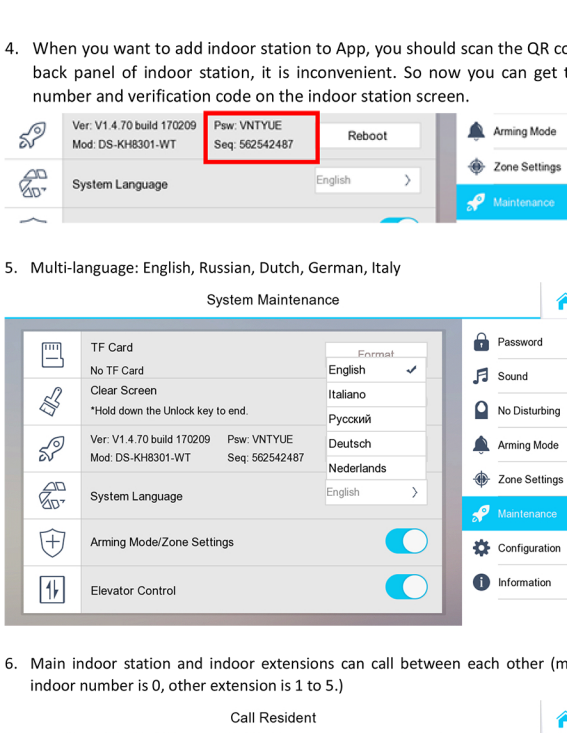
1. Only one page on indoor station screen (used to be two pages)



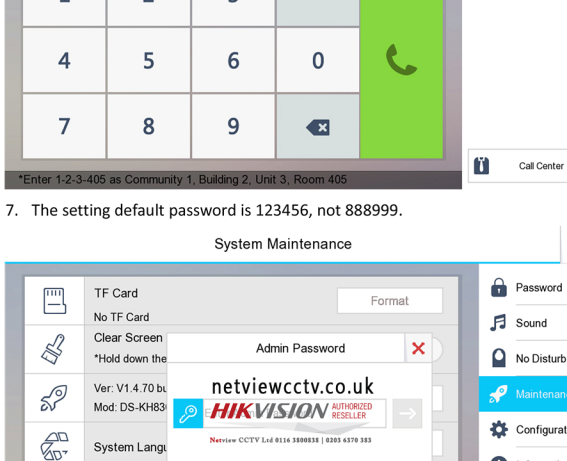
2. One button push to turn off indoor station screen



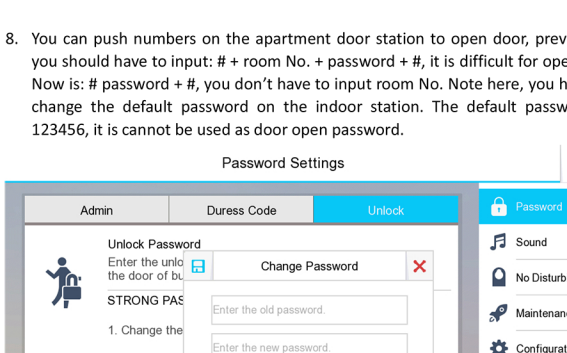
3. Turn on/off the module of "Scene Mode" and "Elevator Co



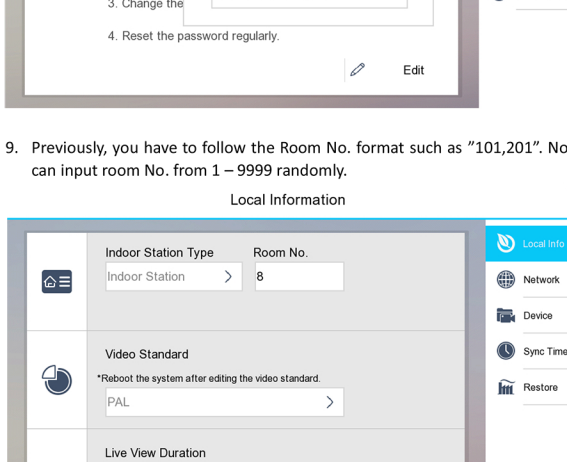
When you turn on the two modules, you can see the module will display at the indoor station screen, the two modules are turn off by default.



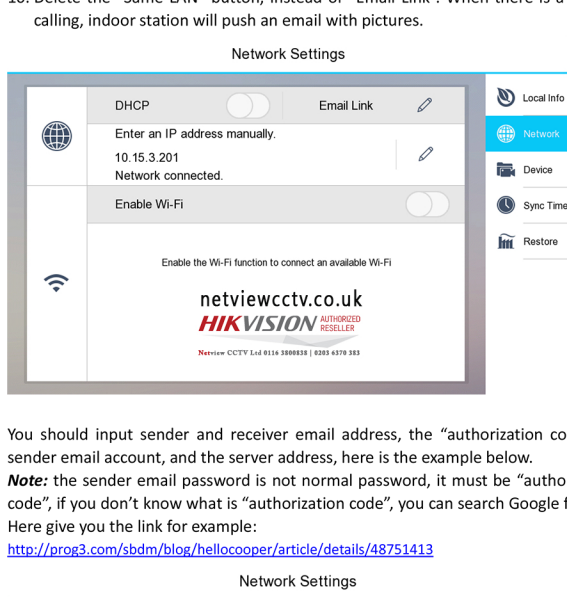
4. When you want to add indoor station to App, you should scan the QR code at the back panel of indoor station, it is inconvenient. So now you can get the series number and verification code on the indoor station screen.



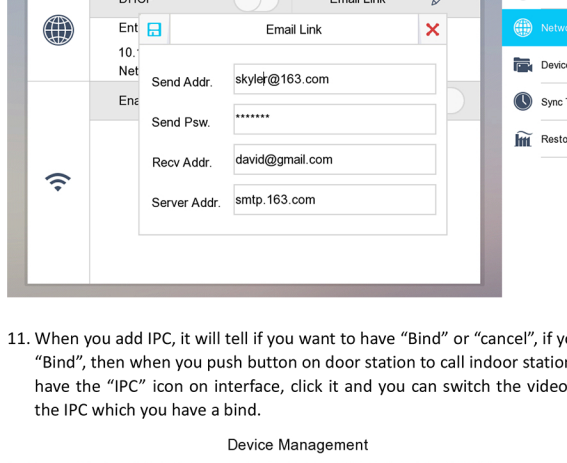
5. Multi-language: English, Russian, Dutch, German, Italy



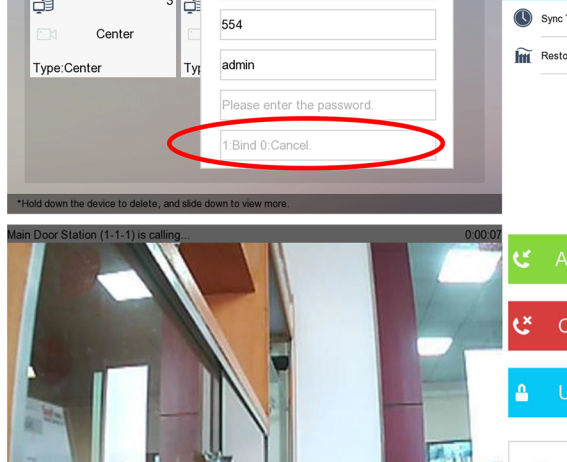
6. Main indoor station and indoor extensions can call between each other (main indoor number is 0, other extension is 1 to 5.)



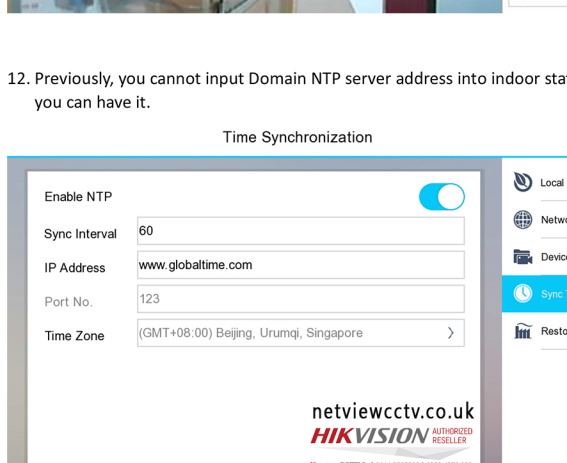
7. The setting default password is 123456, not 888999.



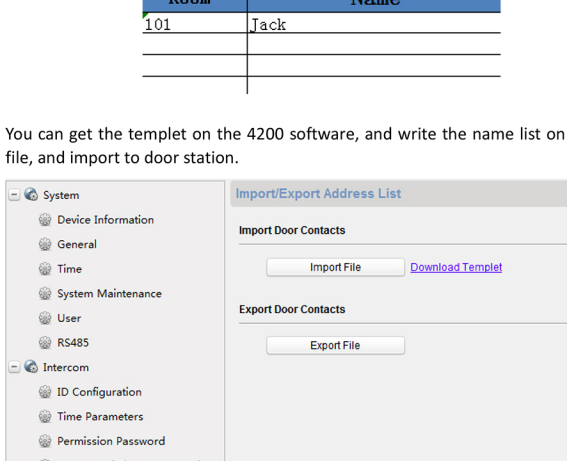
8. You can push numbers on the apartment door station to open door, previously, you should have to input: # + room No. + password + #, it is difficult for operation. Now is: # password + #, you don't have to input room No. Note here, you have to change the default password on the indoor station. The default password is 123456, it is cannot be used as door open password.



9. Previously, you have to follow the Room No. format such as "101,201". Now you can input room No. from 1 – 9999 randomly.



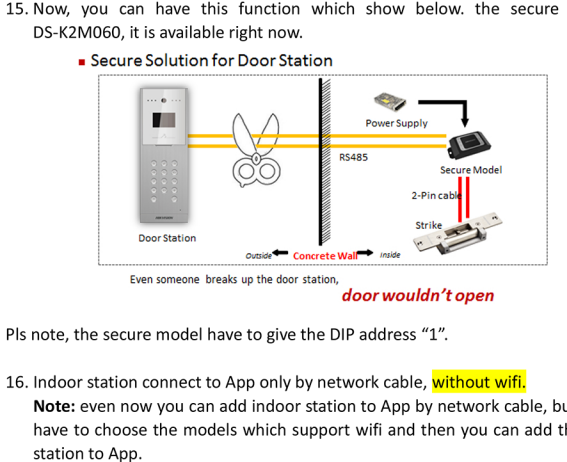
10. Delete the "Same LAN" button, instead of "Email Link". When there is a missed calling, indoor station will push an email with pictures.



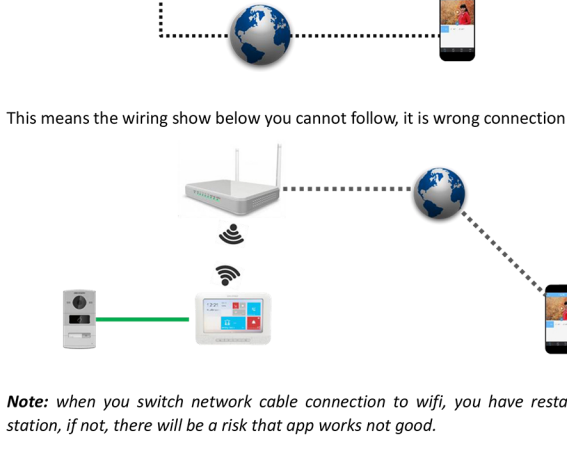
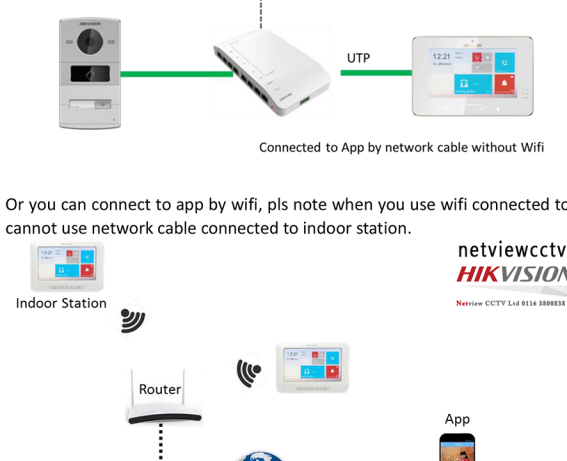
You should input sender and receiver email address, the "authorization code" for sender email account, and the server address, here is the example below.

Note: the sender email password is not normal password, it must be "authorization code", if you don't know what is "authorization code", you can search Google for help. Here give you the link for example:

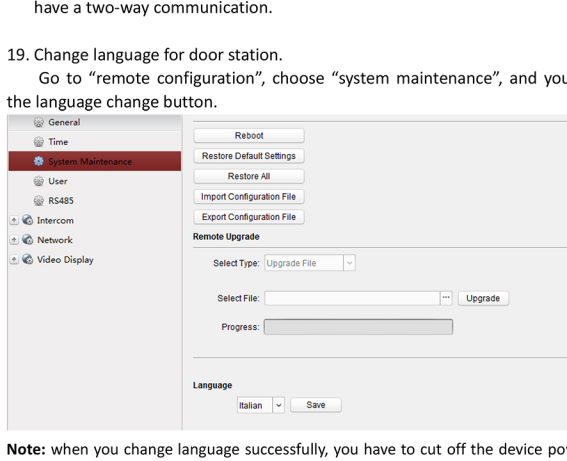
<http://proq3.com/sbmd/blog/hellocooper/article/details/48751413>



11. When you add IPC, it will tell if you want to have "Bind" or "cancel", if you choose "Bind", then when you push button on door station to call indoor station, you can have the "IPC" icon on interface, click it and you can switch the video stream to the IPC which you have a bind.



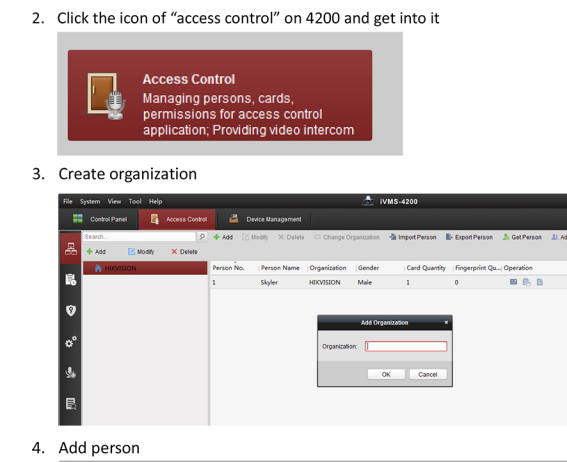
12. Previously, you cannot input Domain NTP server address into indoor station, now you can have it.



13. Name list on the screen of DS-KD8002-VM or DS-KD8102-V. push "*" button on the door station keypad, and you can have this function.

Room	Name
101	Jack

You can get the templet on the 4200 software, and write the name list on the Excel file, and import to door station.

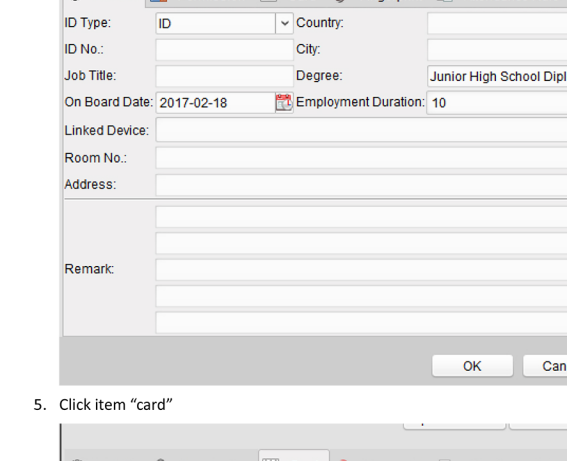


14. The third alarm in port on indoor station can work as a ring doorbell port. If this is a "on-off" button connect to the port, and you push the button, then there will be a ringing made by the indoor station.

Note: DS-KH6310-WL cannot support this function

15. Now, you can have this function which show below. the secure model is DS-K2M060, it is available right now.

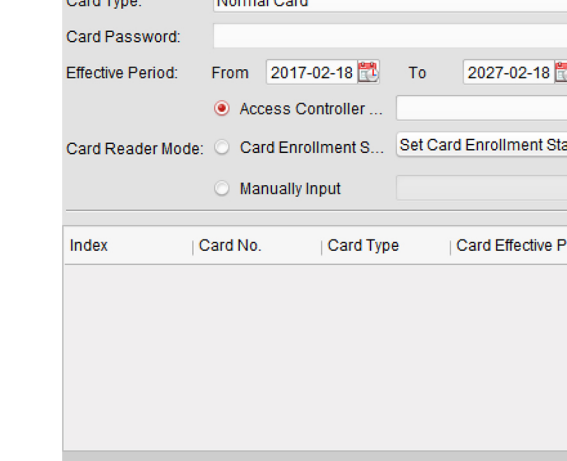
Secure Solution for Door Station



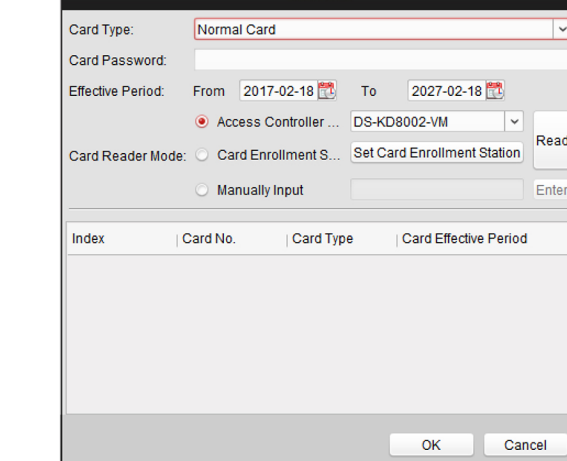
Pls note, the secure model have to give the DIP address "1".

16. Indoor station connect to App only by network cable, **without wifi**.

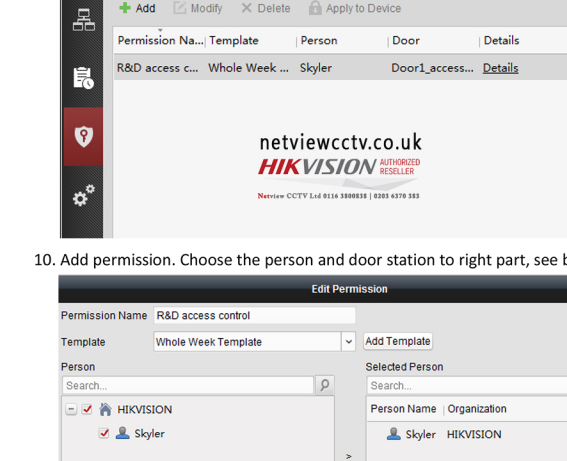
Note: even now you can add indoor station to App by network cable, but you still have to choose the models which support wifi and then you can add this indoor station to App.



Or you can connect to app by wifi, pls note when you use wifi connected to app, you cannot use network cable connected to indoor station.



This means the wiring show below you cannot follow, it is wrong connection.



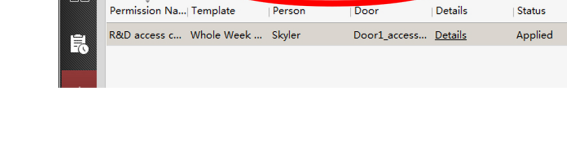
Note: when you switch network cable connection to wifi, you have restart indoor station, if not, there will be a risk that app works not good.

17. Poor audio problem fixed, the audio volume will be louder than before.

18. When you have a live view to monitor the door station camera by indoor station, you can also hear audio from door station, but door station cannot hear voice from indoor station. And you also can turn on audio button on indoor station and have a two-way communication.

19. Change language for door station.

Go to "remote configuration", choose "system maintenance", and you can see the language change button.



Note: when you change language successfully, you have to cut off the device power and powered on again, then language will be changed.

20. Issue cards without card issuer.

Step:

1. Choose one door station and add it into 4200 (V2.6.0.3), for example: choose the model DS-KD8002-VM and add it into 4200

2. Click the icon of "access control" on 4200 and get into it

3. Create organization

4. Add person

5. Click item "card"

6. Click "add" to add card

7. Choose "Access controller" and choose the model of DS-KD8002-VM

8. Click "read", then you swipe the mifare-1 card on the door station, the card No. will be uploaded to 4200.

9. Choose the item of "permission"

10. Add permission. Choose the person and door station to right part, see below:

11. Click "apply to device"

