

## iVMS-4200 Client Software

iVMS-4200 is versatile video management software for the DVRs, NVRs, IP cameras, encoders, access control devices, security control panels, video intercom devices, decoders, VCA devices, etc. It provides multiple functionalities, including real-time live view, video recording, remote search and playback, file backup, alarm receiving, etc., for the connected devices to meet the needs of small and medium-sized projects.

With the flexible distributed structure and easy-to-use operations, iVMS-4200 client software is widely applied to the surveillance project of financial, public security, military, telecommunications, transport, electricity, education, water conservancy industries, etc.

### Key Feature

#### Live View

- View settings and instant playback
- Live view on main/auxiliary screen
- Up to 64-window division for standard screen, and 48-window division for the wide screen
- Custom window division configurable
- Live view in fisheye mode for fisheye camera
- Master-slave tracking
- Resuming the latest live view status after client restart

#### Recording

- Recording both main stream and sub-stream for playback (if device supports)
- Remote manual recording
- Recording schedule for continuous recording, event recording and command recording
- Storing alarm pictures on Storage Server
- Providing SAN and Hybrid Storage Area Network configuration for Hybrid SAN device
- Video file overwritten and expired video file deleting

#### Alarm Management

- Camera linkage and multiple linkage actions
- Device arming and partition and zone settings
- Alarm configuration for camera event, alarm input, zone event and device exception
- Searching and exporting the linked pictures of alarm logs
- Audible warning and pop-up image when alarm triggered
- Receiving alarms in real time, and retrieve the historical events.
- Custom alarm sound as desired
- Displaying the alarm source location on the map

#### Playback

- Local and remote playback



- Instant playback, normal playback, alarm input playback, event playback, ATM playback, VCA playback, and fisheye playback
- Up to 16-ch synchronous playback
- Locating the playback time accurately
- Skipping unconcerned video during VCA playback
- Searching video files which contain POS information
- Providing player in the installation directory to view the downloaded video file
- Merging video files when downloading by date

### **Person Management**

- Managing persons in different groups
- Gaining person information from the device in a batch
- Importing and exporting person information in a batch
- Importing and exporting person face pictures in a batch
- Supporting multiple authentication credentials: card number, fingerprint, face recognition, or the combination of them

### **Access Control and Video Intercom**

- Managing video intercom and access control in one module
- Adding cards, fingerprints, and permissions when adding a person
- Checking for duplicate fingerprint information
- Supporting card reader authentication mode and person authentication mode
- Supporting advanced functions, including multiple factor authentication, custom Weigand rule, first person in, anti-passback, multi-door interlocking, etc
- Reporting card loss if the card is lost and canceling card loss if the card is found
- Real-time alarm management for added access control devices
- Subscribing alarm that the client can display in real-time alarm management when it is triggered
- Alarm linkage with added cameras, including pop-up live view and captured picture
- Adding access control point as hot spot on E-map and viewing the video of the linked camera
- Configuration wizard for access control and time and attendance

### **Attendance**

- Setting general rules for time and attendance
- Customizing overtime levels and setting corresponding work hour rate
- Flexible and quick settings of timetables, shifts and shift schedule
- Getting details attendance from the managed device, including check-in and check-out, break-in and break-out, overtime-in and overtime-out
- Multiple types of reports according to different needs
- Customizing the contents displayed in the report and sending the report to specified emails according to the configured schedule

### **Security Control Panels**

- Real-time alarm management for added security control panels
- Subscribing alarm that the client can display in real-time alarm management when it is triggered
- Acknowledging the received alarm, viewing the alarm on E-map, etc.
- Alarm linkage with added cameras, including pop-up live view, captured picture
- Adding zone as hot spot on E-map and viewing the video of the linked camera

- Accessing AX-series security control device
- Configuration wizard

### **Statistics**

- Data statistics of heat map, people counting, counting, road traffic, face retrieval, license plate retrieval, behavior analysis, face capture, queuing-up time analysis, queue status analysis and intersection analysis
- Showing large picture of face retrieval, license plate retrieval, and behavior analysis and the pictures can be exported for local storage

### **Network**

- Encoding devices, Cloud P2P, access control devices, security control panels, video intercom devices, storage servers, stream media servers connectable
- Checking device's online users
- NTP protocol for time synchronization
- Searching the active online devices
- Adding devices by Cloud P2P which have been added to the Cloud P2P account
- Adding devices by HiDDNS and IP Server; batch importing devices
- Two-way audio and broadcast function

### **PTZ Control**

- Remote PTZ control, preset, patrol, and pattern settings
- 3D positioning, auxiliary focus, and wiper function
- Displaying analog speed dome's local menu via PTZ control panel
- PTZ control of one-touch patrol and one-touch park

### **AI Dashboard**

- Displaying detection frames to show the smart information in live view window
- Real-time checking the matched regular customers, VIP customers, and persons in blacklist information
- Comparing the captured face pictures with the faces in the picture library

### **General**

- Applied in local area network and wide area network
- Facial identification device such as DeepinView and DeepinMind
- Transmission encryption when logging with SDK over TLS mode
- E-map function. Adding, deleting, editing and view e-map, zooming in/out and moving the e-map
- Remote configuration for added devices
- User permission management
- Creating a password to activate devices. For device which supports Hik-Connect, enabling Hik-Connect service when activating it
- Resetting device password
- Hardware decoding for live view and playback
- Setting email when activating devices, and resetting the password of devices by the email
- Downloading video files to PC
- Log search and backup
- Importing and exporting configuration file
- Auto backing up database according to the configured schedule

## Specification

Model		iVMS-4200	
Database		SQLite (encrypted)	
Supported Language		Bulgarian, Croatian, Czech, Danish, Dutch, English, Finnish, French, German, Greek, Hungarian, Italian, Japanese, Korean, Lithuanian, Norwegian, Polish, Portuguese, Romanian, Russian, Serbian, Simplified Chinese, Slovak, Slovenian, Spanish, Swedish, Thai, Traditional Chinese, Turkish, Vietnamese	
Client	General	User	50 users and one super user
		E-map	256
		Encoding Device	256
		Group	256 groups 256 channels for each group
		Channel	256 channels for all groups
		Storage Server	16
		Stream Media Server	16
	Video	Live View	64-ch live view at a time
		Auxiliary Screen Preview	4 auxiliary screens for live view
		Playback	16-ch playback at a time
		Synchronous Playback	16-ch synchronous playback
		Download	16-ch downloading tasks at a time
	Access Control	Organization	10 hierarchies
		Person	3,200
		Card	16,000
		Access Group	128
		Access Point (Doors/Floors)	64
		Template	255
		Door Station	16
		Indoor Station	512
		Master Station	256
		Shift	64
	Time and Attendance Data	The data are stored in the database, which is saved in the software's installation path. The retention period of attendance results and retention period of original records depend on the HDD capacity and amount of the data generated during usage.	
Security Control	Security Control Panel	256	
	Zone	2,048	
Storage Server	Recording Performance	64-ch × 2 Mbps at a time	
	VOD Performance	64-ch × 2 Mbps at a time	
	User	32	
	iVMS-4200 Client	128 iVMS-4200 clients connected to the Storage Server	
Stream Media Server	Incoming/Outgoing Stream	64-ch incoming video stream 200-ch outgoing video stream	

## System Requirement

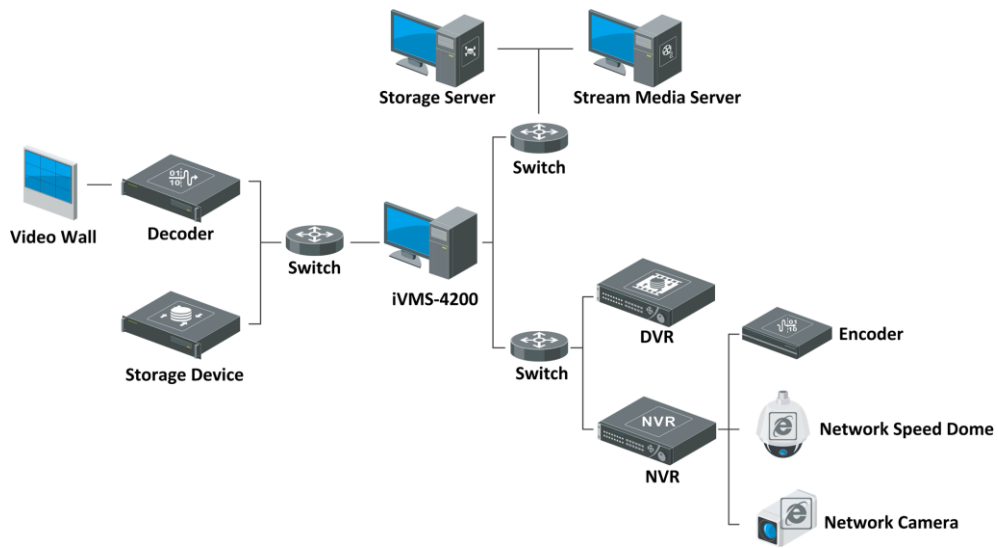
Features		Requirements
Minimum	Processor	Intel® Core™ i5-4590 @ 3.30 GHz
	Memory	8 GB of RAM
	Operating System	Microsoft® Windows 7 (64-bit)
	Video Card	NVIDIA® GeForce GTX 970
Recommended	Processor	Intel® Xeon® E3-1226 V3 @ 3.30GHz
	Memory	8 GB of RAM
	Operating System	Microsoft® Windows 7 (64-bit)
	Video Card	Intel® HD Graphics P4600
High Performance	Processor	Intel® Core™ i7-6700K @ 4GHz
	Memory	16 GB of RAM
	Operating System	Microsoft® Windows 7 (64-bit)
	Video Card	NVIDIA® GeForce GTX 1070

## Live View Performance

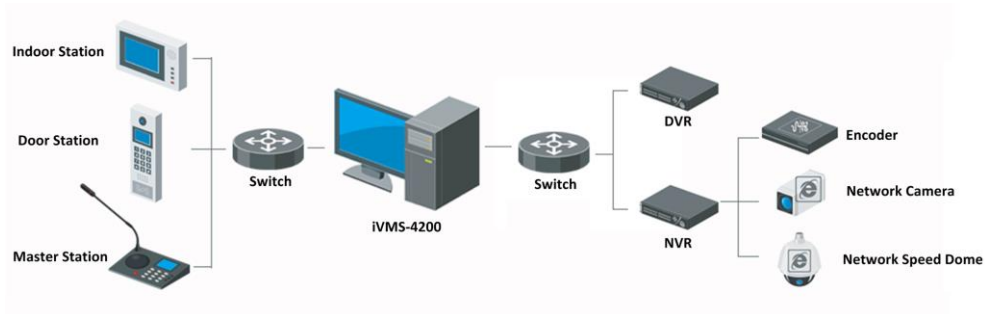
H.264												
Resolution	Bit Rate (Mbps)	Frame Rate (fps)	CPU: i3-8100 Graphics Card: GT1030 D5 WIN 7 64 bits			CPU: i5-4590@3.3GHz Graphics Card: GTX970 WIN 7 64 bits			CPU: i7-6700k@4GHz Graphics Card: GTX1070 WIN 7 64 bits			
			Channels	CPU(%)	Memory(MB)	Channels	CPU(%)	Memory(MB)	Channels	CPU(%)	Memory(MB)	
720P	3	30	-	-	-	25	78-89	1,330	41	81-90	1,286	
1080P	6	30	-	-	-	11	74-88	1,126	19	75-89	1,242	
8MP	12	30	-	-	-	3	79-90	2,099	5	63-75	1,454	
4CIF	1	30	57	58-78	1,577	-	-	-	-	-	-	
H.264+												
Resolution	Bit Rate (Mbps)	Frame Rate (fps)	CPU: i3-8100 Graphics Card: GT1030 D5 WIN 7 64 bits			CPU: i5-4590@3.3GHz Graphics Card: GTX970 WIN 7 64 bits			CPU: i7-6700k@4GHz Graphics Card: GTX1070 WIN 7 64 bits			
			Channels	CPU(%)	Memory(MB)	Channels	CPU(%)	Memory(MB)	Channels	CPU(%)	Memory(MB)	
720P	3	30	24	62-84	1,208	27	63-90	1,382	48	53-80	1,125	
1080P	6	60	11	60-89	1,024	12	61-90	1,536	21	80-90	1,161	
H.265												
Resolution	Bit Rate (Mbps)	Frame Rate (fps)	CPU: i3-8100 Graphics Card: GT1030 D5 WIN 7 64 bits			CPU: i5-4590@3.3GHz Graphics Card: GTX970 WIN 7 64 bits			CPU: i7-6700k@4GHz Graphics Card: GTX1070 WIN 7 64 bits			
			Channels	CPU(%)	Memory(MB)	Channels	CPU(%)	Memory(MB)	Channels	CPU(%)	Memory(MB)	
720P	3	30	14	69-91	1,054	15	70-90	850	26	71-89	1,251	
1080P	6	30	8	64-81	1,105	8	60-85	1,239	15	70-88	1,284	

## Typical Application

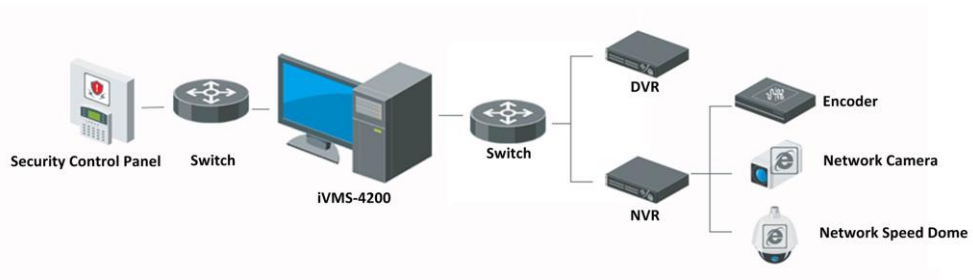
### Application for Video Surveillance



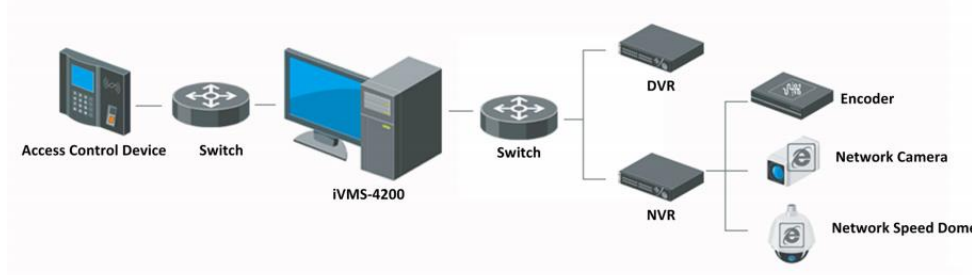
### Application for Video Intercom



### Application for Security Control Panel



### Application for Access Control



Distributed by

**HIKVISION®****Headquarters**

No.555 Qianmo Road, Binjiang District,  
Hangzhou 310051, China  
T +86-571-8807-5998  
overseasbusiness@hikvision.com

**Hikvision USA**  
T +1-909-895-0400  
sales.usa@hikvision.com

**Hikvision Australia**  
T +61-2-8599-4233  
salesau@hikvision.com

**Hikvision India**  
T +91-22-28469900  
sales@pramahikvision.com

**Hikvision Canada**  
T +1-866-200-6690  
sales.canada@hikvision.com

**Hikvision Thailand**  
T +662-275-9949  
sales.thailand@hikvision.com

**Hikvision Europe**  
T +31-23-5542770  
sales.eu@hikvision.com

**Hikvision Italy**  
T +39-0438-6902  
info.it@hikvision.com

**Hikvision Brazil**  
T +55 11 3318-0050  
Latam.support@hikvision.com

**Hikvision Turkey**  
T +90 (216)521 7070- 7074  
sales.tr@hikvision.com

**Hikvision Malaysia**  
T +601-7652-2413  
sales.my@hikvision.com

**Hikvision UK & Ireland**  
T +01628-902140  
sales.uk@hikvision.com

**Hikvision South Africa**  
Tel: +27 (10) 0351172  
sale.africa@hikvision.com

**Hikvision France**  
T +33(0)1-85-330-450  
info.fr@hikvision.com

**Hikvision Kazakhstan**  
T +7-727-9730667  
nikia.panfilov@hikvision.ru

**Hikvision Vietnam**  
T +84-974270888  
sales.vt@hikvision.com

**Hikvision UAE**  
T +971-4-4432090  
salesme@hikvision.com

**Hikvision Singapore**  
T +65-6684-4718  
sg@hikvision.com

**Hikvision Spain**  
T +34-91-737-16-55  
info.es@hikvision.com

**Hikvision Tashkent**  
T +99-87-1238-9438  
uzb@hikvision.ru

**Hikvision Hong Kong**  
T +852-2151-1761  
info.hk@hikvision.com

**Hikvision Russia**  
T +7-495-669-67-99  
sateru@hikvision.com

**Hikvision Korea**  
T +82-(0)31-731-8817  
sales.korea@hikvision.com

**Hikvision Poland**  
T +48-22-460-01-50  
info.pl@hikvision.com

**Hikvision Indonesia**  
T +62-21-2933759  
Sales.Indonesia@hikvision.com

**Hikvision Colombia**  
sales.colombia@hikvision.com